



MOVE

Move the future, Move your heart!

www.midong.com

T. +82-2-587-6015

F. +82-2-585-1306

E. midong@midong.com

2161, Nambusunhwan-ro, Seocho-gu, Seoul, Korea



Since establishment in 1970,
electrical engineering and construction for building, plant, infrastructure
and communication have aquired world class competitiveness.
Our track record is extensive and we apply the latest construction
method and most advanced system to build our customer's product.
MIDONG E&C move forward and aim higher for the future.

the future

CONTENTS

CEO Message	04
Great Movement	
_ 1 Advanced Management System	06
_ 2 Achieve Global Competitiveness	08
_ 3 Aim higher for future	10
Business Area	
_ Infrastructure Environmental R&D Center	12
_ Housing Resort Building	16
_ Plant Power Industrial Others	20
Corporate Value	24
History	26
Corporate Profile	28

Moving into top class builder to have applied specialized technology leading global competencies in world and future



Move forward continuously, MIDONG E&C have concentrated electrical engineering and construction during 50 years since establishment in 1970.

Currently, we are challenging the second leap continuing to rise up to our future 100 years in the world.

On the basis of our customer's heart warming trust, we implement customer satisfaction and customer's value maximization.

We remain committed to in our business management operation with various portfolio and to making decisions with the utmost integrity.

Building a great tomorrow and we constantly look forward to a future full of hope and promise.

MIDONG E&C
CEO Lee Byung Bok



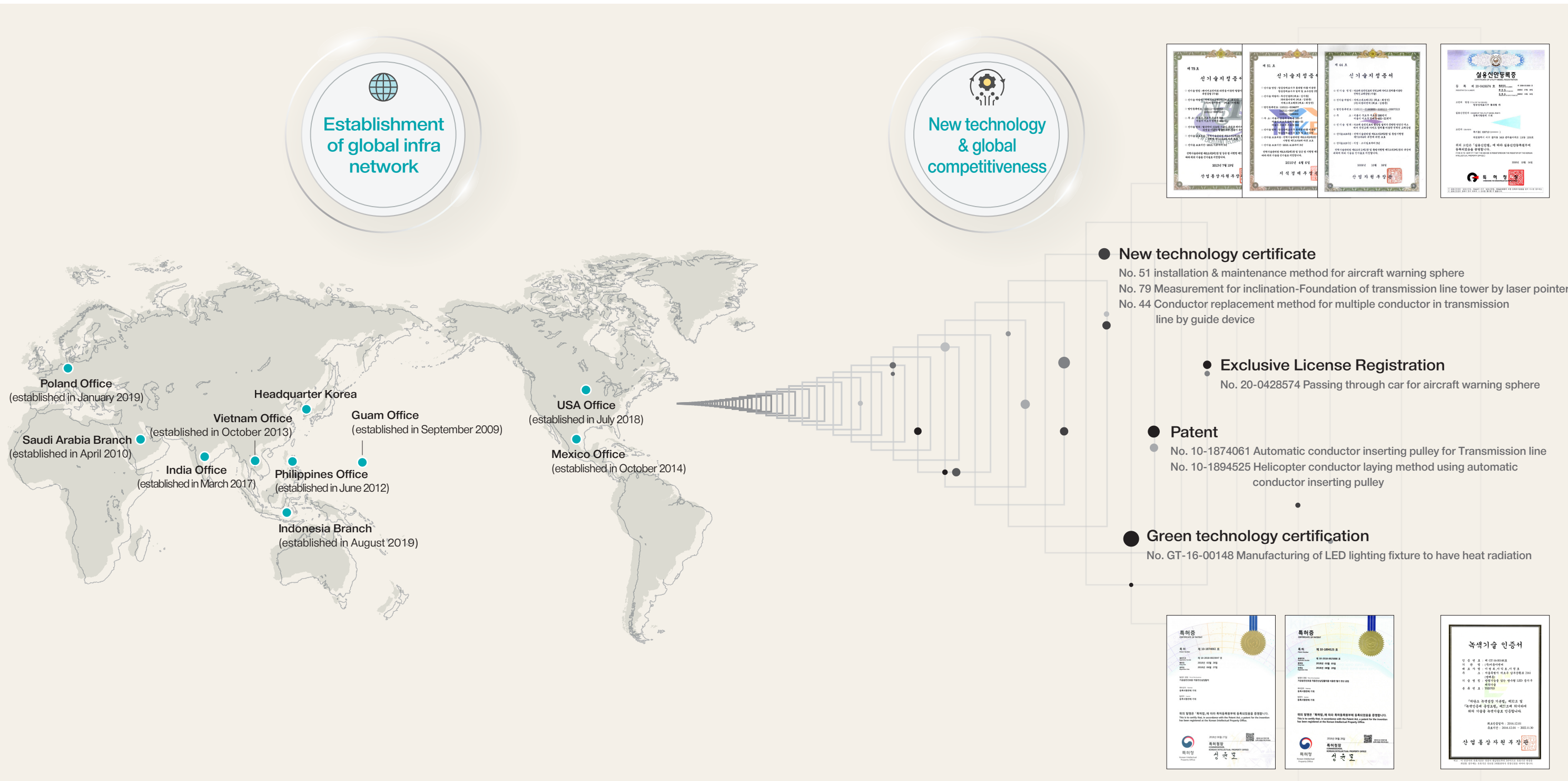
Improve our corporate governance system and enhance both the transparency and independence of decision making process by advanced management system

Through integrated and real time monitoring system, control and manage all current running domestic and overseas project. Our established quality, environment and safety management system have enable us to keep global standards satisfying with corporate, human and environment.



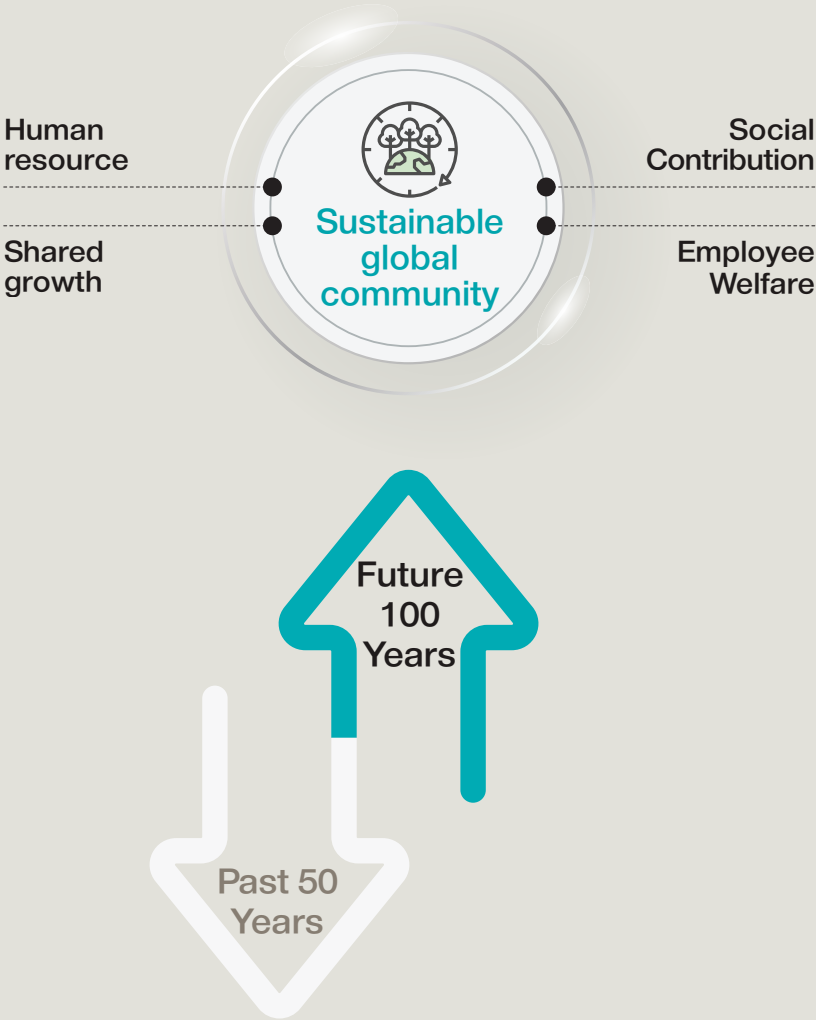
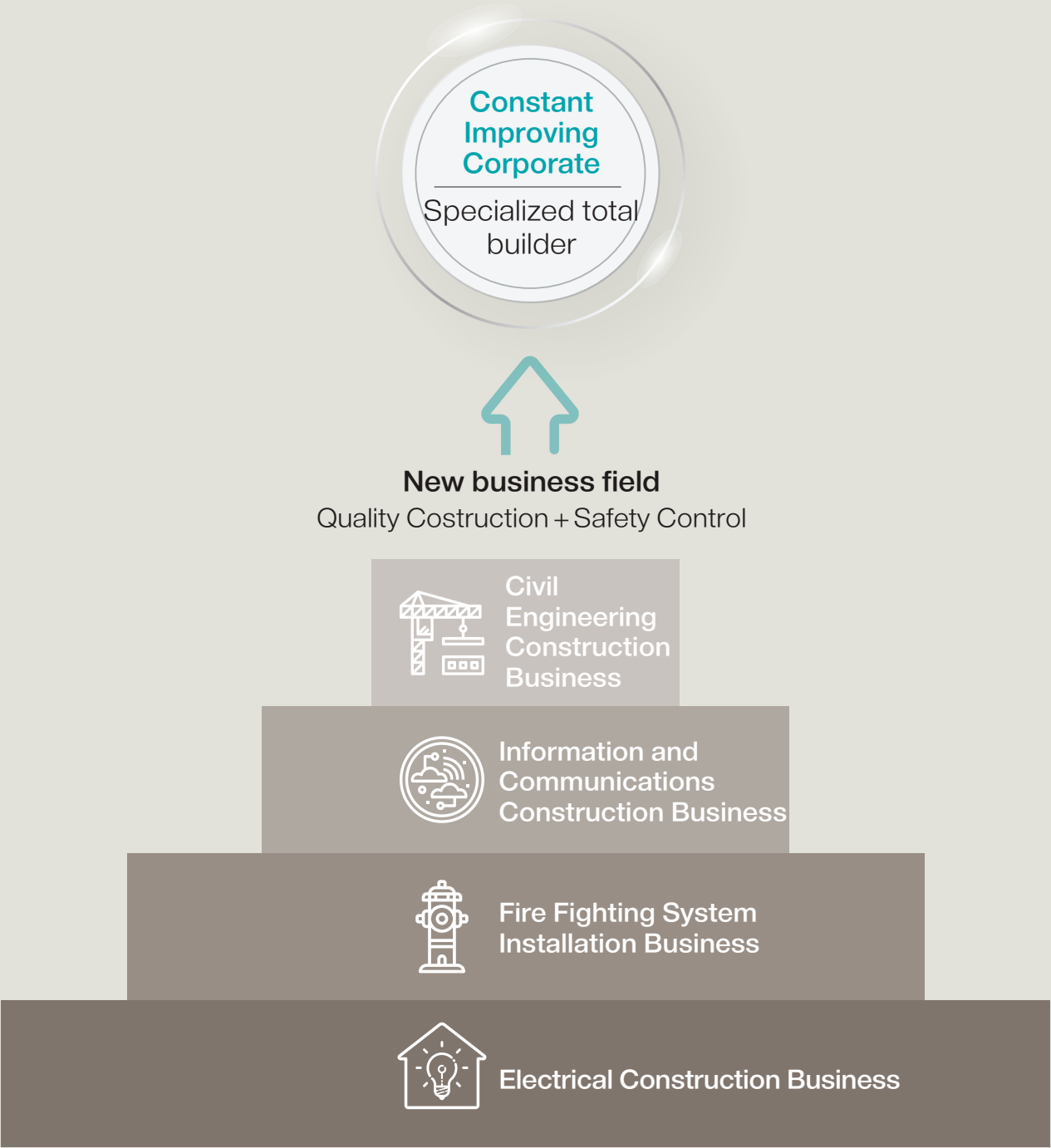
Moving into global competitiveness via advanced technology and global networks

Has applied specialized new technology on the basis of our 50 years accumulative experience and current our network in world. We continue to move into a specialized top class builder and build up global infrastructure.



Continue to aim higher for future and we work constantly to improve our technology as a specialized builder

Level up for continuing to rise up to our future 100 years in the world. We constantly read future trends ahead of the competition. We are challenging world class new technology going to global and win major project.



Move the City

From the Dubai Metro Project to Incheon International Airport, MIDONG E&C's unrivaled capabilities and specialized experiences change the skyline of city and inspire the world

Railway



Airport



Highway



R&D Center

Environmental





UAE Dubai Metro Project



Gangneung Anin Power Plant
345kV Transmission Line



Hantan river dam



Daegu Line Double-track Railway
(Hayang-Youngcheon)



Yeoju-Yangpyeong
National Highway



Philippines Puerto Princesa
International Airport

Civil Infrastructure

Airport / Railway / Harbor / Highway / Transmission line

MIDONG E&C participates in the construction of public infrastructure to realize an ideal city model based on advanced technological prowess that is recognized not only in the domestic market but also in the global market.

Environmental Facility

Sewage Treatment / Waste and Disposal / etc

MIDONG E&C contributes to building environmental facilities and R&D Center as a reliable companion that helps build a better future.



Incheon International Airport Terminal 2



UAE Khalifa Port



National Institute of Ecology



Green Bio Research Institute of Seoul National University

Move the Life

A place where people gather, a place to have fun and relax
MIDONG E&C's goal is to develop the value of human-centered space. From apartments, mixed-use residential buildings, hotels to country clubs
MIDONG E&C moves people's daily life by establishing a people-focused residential system and living environment.

Apartment



Office Building



Mixed - Use



Resort

Hospital



Buildings

Office / Data Center / Institute / Hospital / R&D Center / Shopping Complex / etc

We continue to execute creative challenges by participating in the construction of a new landmark that everyone wants to visit and a space where work and life coexist.



Bangbae Gyeongnam Apartment Reconstruction Project

Residential Building & Resorts

Apartment / Mixed-Use Residential Building / Office Building / Resort / Hotel / etc

MIDONG E&C's technology is embedded in residential facilities that make everyday life special, as well as in comfortable rest areas like everyday.



Sofitel Ambassador Seoul Hotel



High 1 Resort



Hanam Gamil Public Apartment



Haeundae LCT Resort



Eunpyeong St. Mary's Hospital



Sinchon Severance Hospital



GT Tower



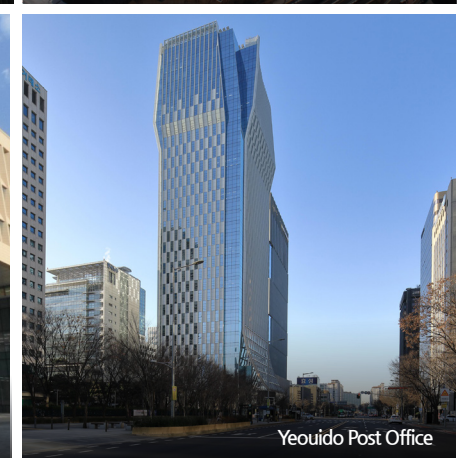
Yeosu EXPO



KEPCO E&C



Government Complex Sejong



Yeouido Post Office

Move the Industry

MIDONG E&C participates in infrastructure construction as steel mills, oil refinery facilities, high-tech factories, power plants, and other specialized plants and these sectors are the basis of Korea's industry competitiveness that is world-class technology as a world-leading group.

MIDONG E&C strives to go beyond the limits of the Korean construction industry and lead industrial development with outstanding capabilities.

Oil & Gas



Solar Power



Military Facilities

Power Plant



Semiconductor



Automobile





Hyundai Oil Bank

Plant

Steel Mill / Petrochemical / Oil Refinery / CCK / FED / etc

MIDONG E&C supplies optimized technology and solutions to satisfy the needs of customers, such as industrial plants and military facilities which are required scale and expertise.

Industrial Plant & Power Plant

Semiconductor / LCD / Thermal / etc

MIDONG E&C contributes to economic value creation by constructing industrial and power plants which are reserved as industry bases.



LG Electronics LCD TV Manufacturing Plant



Taean Thermal Power Plant



Mexico Kia Motors Manufacturing Plant



India Samsung Mobile Manufacturing Plant



Poland SK Innovation Battery Plant



Vietnam Hyosung LPG Cavern



Vietnam Hanwha Solar Plant



Poland LG Chem Battery Plant



Pyeongtaek United States Forces Korea Headquarter



Gunsan Airship Hanger



Saudi Arabia Shuqaiq Steam Power Plant



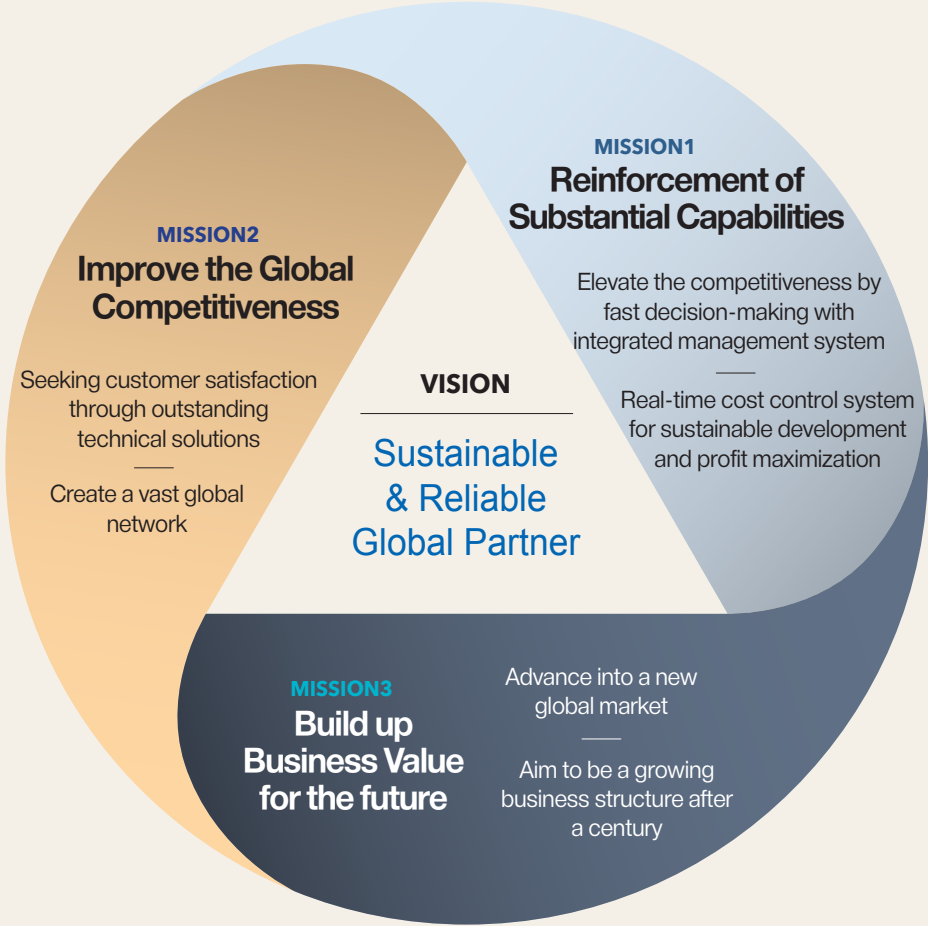
Vietnam Samsung Fabrication Plant

We pursue sustainable and impressive management based on the trust of our clients



“Our principal vision is to become a reliable global partner that clients can trust through sustainable management practices for the future.”

| Vision & Mission



| Management Priorities



MIDONG E&C is constantly growing over a half century

From establishment in 1970 to present, MIDONG E&C has contributed greatly to the national economy development and construction industry growth.

1970-

- 1970.01**
Established Midong Electric Co., Ltd
- 1970.01**
Obtained Electrical Construction License (Grade 1)
- 1974.09**
Head Office Relocation
(295-5, Eulji-ro 3-ga, Jung-gu, Seoul, Republic of Korea)

1980-

- 1980.02**
Head Office Relocation (310-63, Eulji-ro 4-ga, Jung-gu, Seoul, Republic of Korea)
- 1985.03**
Increase of Capital (₩210,0000,000)
- 1985.08**
Obtained Fire Fighting System Installation License (Grade 2)
- 1985.09**
Head Office Relocation (61-5, Nonhyeon-dong, Gangnam-gu, Seoul, Republic of Korea)
- 1989.12**
Head Office Relocation (2161, Nambusunhwan-ro, Seocho-gu, Seoul, Republic of Korea)

1990-

- 1990.11**
Increase of Capital (₩420,000,000)
- 1999.11**
Increase of Capital (₩840,000,000)
- 1996.02**
Obtained ISO 9001 certification (Quality Management System)
- 1996.08**
Obtained Fire Fighting & Fire Alarm License

- 1997.07**
Obtained Earthwork License
- 1998.05**
Trade Business Registration
- 1999.11**
Increase of Capital (₩1,500,000,000)
- 1999.11**
Obtained Information and Communications Construction License
- 1999.11**
Obtained Civil Engineering Construction License
- 1999.11**
Increase of Capital (₩2,000,000,000)

1997-

2000-

- 2000.06**
Changed to Electrical Construction Business License
- 2000.12**
Increase of Capital (₩3,000,000,000)
- 2001.04** Changed Company Name "Midong Engineering & Construction Co., Ltd"
- 2004.06** Obtained ISO 14001 certification (Environmental Management System)
- 2006.02**
Registered Software Business Contractor
- 2006.09**
Registered International Construction Contractor (Electrical, Information and Communications, Civil Engineering)

- 2006.10**
Acquired new technology designation certificate (power wire replacement method)
- 2007.02**
Registered KOICA (Korea International Cooperation Agency)
- 2007.02**
Registered FED US army Construction Contractor in Korea
- 2007.02**
Established Dubai Branch
- 2007.06**
Registered as a Uninterruptible Power Distribution Construction Company
- 2009.09**
Established Guam Office

2006-

2010-

- 2010.01** Established Abu Dhabi Branch
- 2010.04** Established Saudi Arabia Branch
- 2010.09** Obtained KOSHA 18001 certification (Korea Safety and Health Management System)
- 2012.06** Established Philippines Office
- 2013.10** Established Vietnam Office
- 2014.10** Established Mexico Office
- 2017.03** Established India Office
- 2017.07** Registered Underground Power Distribution Company
- 2018.07** Established USA Office
- 2019.01** Established Poland Office
- 2019.08** Established Indonesia Branch
- 2020.08** Obtained ISO 45001 certification (Health and Safety Management System)
- 2020.12** Increase of Capital (₩3,315,050,000)

Company Information

Company Name

Midong E&C Co., Ltd

CEO

Byung Bok Lee

Foundation

20th January 1970

Address

2161, Nambusunhwan-ro, Seocho-gu, Seoul, Republic of Korea

Contact

T +82-2-587-6015 | F +82-2-585-1306 | Email midong@midong.com

License

Electrical | Fire Fighting System | Information and Communications | Civil Engineering

Website

www.midong.com

Capital

₩ 3,315,050,000

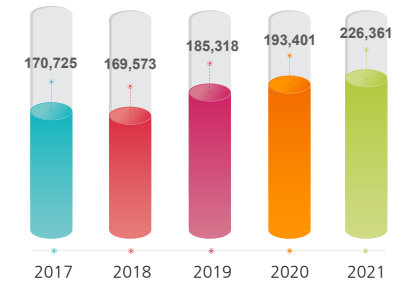
Credit Rating

A+ (eCredible)

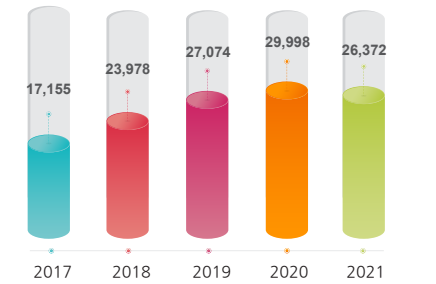
Construction Capability Assessment

(Unit : million won)

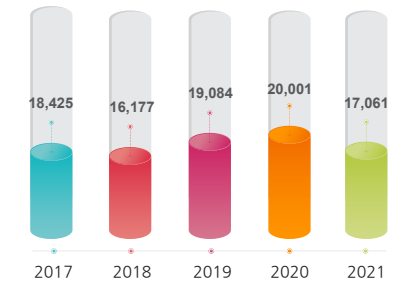
Electrical Construction Business



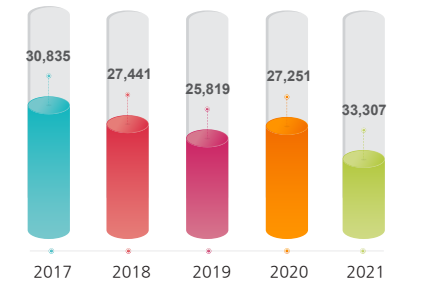
Fire Fighting System Installation Business



Information and Communications Construction Business



Civil Engineering Construction Business



Number of Technician & Labor

(March of 2022)

Classification	Technician	Labor	Total
Permanent	95	60	155
Temporary	780	520	1,300
Total	875	580	1,455



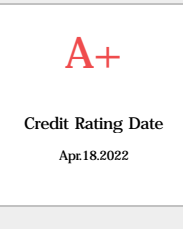
CREDIT RATING

ECC202204009543 | MIDONG ENGINEERING & CONSTRUCTION CO.,LTD. | Lee, Byung Bok / Lee Jung-Ho, Lee Ik-Hyo | 114-81-37654

Company Information

Company Name	MIDONG ENGINEERING & CONSTRUCTION CO.,LTD.
President	Lee, Byung Bok / Lee Jung-Ho, Lee Ik-Hyo
Head Office	(06699) 2161 (Bangbae-dong), Nambusunhwan-ro, Seocho-gu, Seoul
TEL	02-587-6015
Business Reg. Number	114-81-37654
Line of Business	General Electric Construction
Date of Registration	Jan.20.1970
Fiscal Year	Dec.31.2021
Credit Rating Effective Date	Apr.18.2022~Mar.16.2023

Credit Rating



Credit Rating History

Reporting Date	Fiscal Year	Credit Rating	Cash Flow Rating
Apr.18.2022	Dec.31.2021	A+	B
Mar.17.2022	Dec.31.2020	A+	B
Mar.18.2021	Dec.31.2019	A+	B

Company Overview

Main Items	Business Profile		Customer(%)		Major Shareholders	
Electric Construction	No. of Employees	152	Hyundai Engineering & Construction Co., Ltd.	34%	Lee, Ik-Hyo	44.90%
	Company Size		Samsung C&T Corporation	15%	Lee, Jung-Ho	13.60%
	Legal Status	Audited Company	DL E&C	7%	Lee, You-Na	4.50%
	Paid-in Capital (KRW million)	3,315	KT Corporation	6%	Lee, Seung-Jin	4.50%

(Unit: KRW million)

Fiscal Year	Total Asset	Total Liabilities	Total Stockholders' Equity	Sales	Operating Income	Net Income
Dec.31.2021	76,000	25,364	50,636	160,913	5,717	5,294
Dec.31.2020	62,272	15,576	46,695	98,871	3,759	3,342
Dec.31.2019	60,792	23,166	37,625	134,128	3,417	3,266
Dec.31.2018	55,542	20,509	35,032	135,426	4,716	3,495

Move your heart

For a next century
we are now facing an unknown future beyond a huge wave of change.
MIDONG E&C will focus on the infinite growth possibility based on practical
preparation and accurate prediction with smart technology,
innovative management, and insightful eyes.
We move customers' hearts by key technology, trust, and satisfaction!
This is why MIDONG E&C looks forward to the future.

